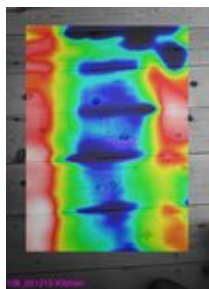
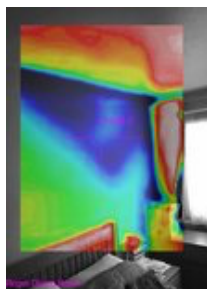


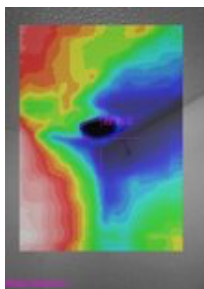
Improve the warmth of your home, save money,
and take action to reduce climate change with a
C.H.E.E.S.E. heat-loss thermal survey!



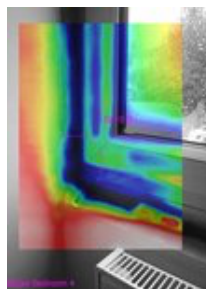
Draughts between
floorboards



Missing cavity
wall insulation



Cold bathroom
vent



Poorly fitted
window

The C.H.E.E.S.E. Project (Cold Homes Energy Efficiency Survey Experts) is an award winning, not for profit community project covering greater Bristol.

We use a unique thermal imaging method to survey inside homes to reveal heat loss problems in detail. We provide a video of the survey and written and verbal reports to help you reduce your energy use, carbon footprint and energy bills by up to a third. Big energy savings can then be made by targeting faults precisely. Often this can be done simply, at low cost.

Whether you're a tenant, homeowner or landlord, have a small or large budget, want to combat fuel poverty or climate change, start with a C.H.E.E.S.E. survey. We charge from £100.00 (subsidised) for three rooms.

"CHEESE is the single most useful intervention I have had in my home since I began doing improvements when I first bought a house."

Bristol Green Doors customer 2019

Surveys are FREE to low-income households.

www.cheeseproject.co.uk/apply-for-a-survey

The C.H.E.E.S.E. Project survey procedure

Before the survey day, you heat your house/flat overnight. At the start of the survey a large extractor fan is fitted in an external doorway to reduce the internal pressure and to draw in cold air to enable clear images of faults. Our Energy Tracers then survey room by room with a thermal-imaging camera to reveal cold spots caused by poor insulation, draughts and construction. You accompany the surveyor with a tablet screen to view the thermal images and see first-hand what is found.

Householder briefing on heat loss and potential remedies

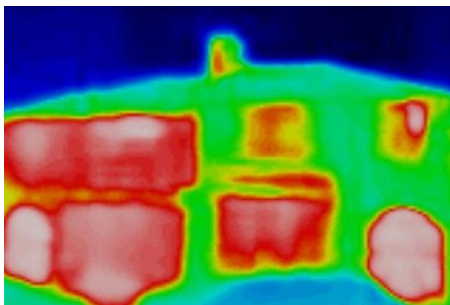
At the end of the survey, you are briefed on the problems and how they might be remedied - some with low-cost DIY. We give you a memory stick containing the survey video, together with audio of the surveyor's comments, for subsequent reviewing, and digital guides to remedial action. The survey and briefing take about two hours - more for a large house. *If you are on a low income we can help with the cost of the overnight heating.*

*"We had a survey done on Monday, and I have been fixing leaks ever since 😊
It was an absolute pleasure to have the guys around and I found the information supplied extremely useful. I cannot recommend The C.H.E.E.S.E. Project highly enough. Thank You all."* (Customer Jan. 2019)

Energy saving and remedial action

So that we can assess the value of our surveys, together with a University of Bristol scheme, the C.H.E.E.S.E team follow-up after a month, and one year. They obtain your feedback on actions taken by you and any resulting changes to warmth, and savings of energy and money. Our surveys are so effective that 2/3rds of customers take remedial action within a month. C.H.E.E.S.E. surveys do work to reduce carbon emissions.

**For all information go to: www.cheeseproject.co.uk
email: surveys@cheeseproject.co.uk**



You may find a thermal image of the outside of your home on the Heatview website:
www.heatview.co.uk