



Community Energy Partnerships

Tuesday 2nd June 2026

The Assembly Rooms, Frome



Agenda - Morning

10:30 Welcome & Introductions – Cara Naden, Wessex Community Energy Network

10:35 Update on the Local Power Plan & Funding – Katherine Rooney, SW Net Zero Hub

Local Authority Collaboration

10:45 Community Energy Collaboration FRECo & Frome Town Council – Will Reynolds

11:05 Home Energy Collaboration – Sara Grimes, BWCE & Ellena Bryant, BANES Council

11:25 Community Engagement and Learnings from the Future Energy Landscapes Programme – Neil Best, Centre for Sustainable Energy

11:45 Q&A

11:55 *Refreshment Break*

Shared Ownership

12:15 Shared Ownership in Practice – Alex Lockton, Empowered & Paul Phare, Energy4All

12:35 Commercial Developer's Perspective – Eden Renewables

12:55 Q&A

13:05 *Lunch & Networking*

Agenda - Afternoon

14:00 Securing Volunteers for Community Energy Projects using Younity's Community Energy Connect
Ewan Corley, Younity

14:15 – 15:45 Innovation Workshops – 3 x 25 minute sessions

Licence Exempt Supply & Younity's Community Power Club – Connie Duxbury, Younity

Domestic Rooftop Solar - Iris Partridge, Resilience Network

Optimising Community-Scale Batteries to Support Community Energy Groups and the Local Electricity Grid - Yang Lu, Envol Energy

Mine Water Heating – Alex Lockton, Empowered

15:45 Closing Session – Key takeaways and next steps

16:00 Close of Meeting

WESSEX COMMUNITY ENERGY NETWORK

QUICK FUNDING UPDATE

Katherine Rooney, Community Energy Manager

Katherine.rooney@westofengland-ca.gov.uk

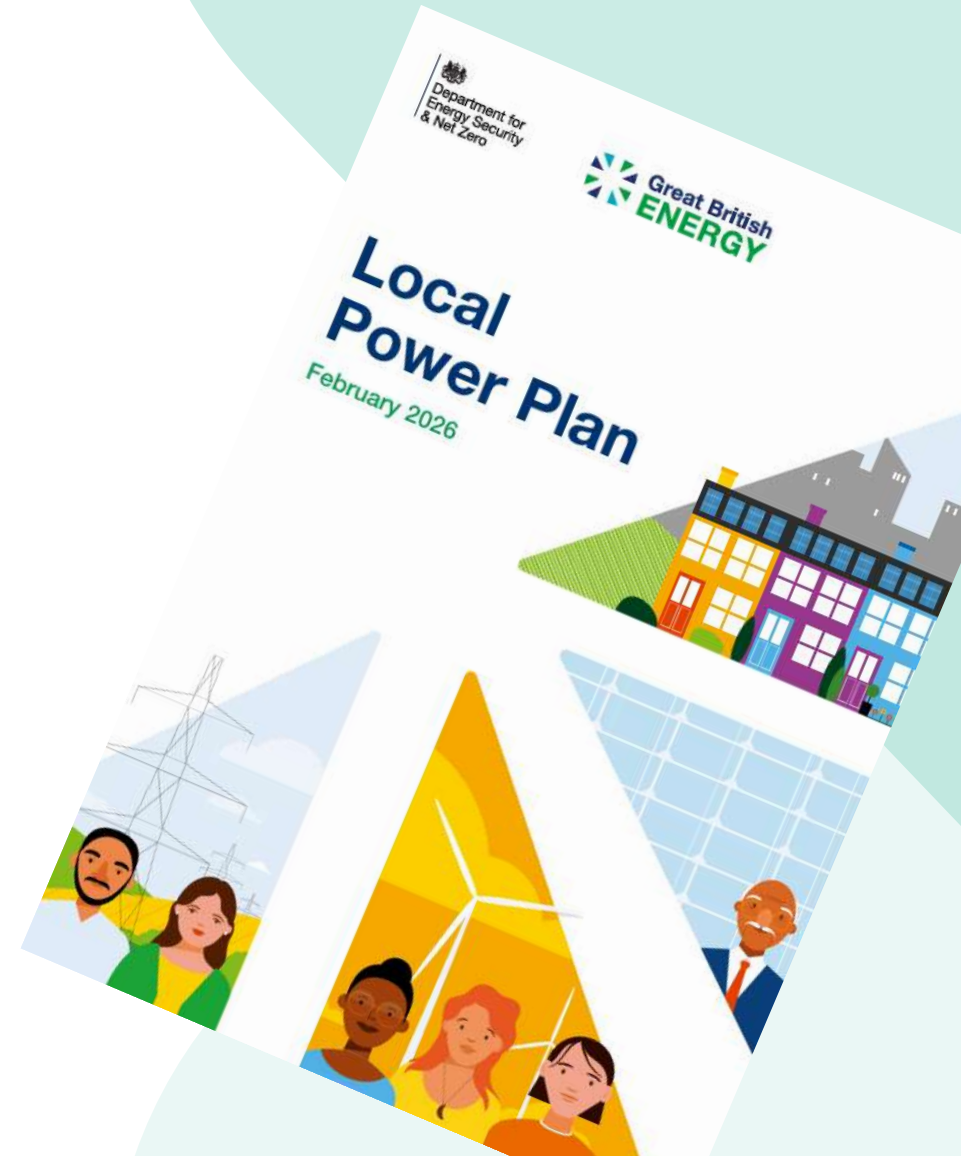
GREAT BRITISH ENERGY (GBE) LOCAL POWER PLAN

<https://www.gbe.gov.uk/local-power-plan>

DIRECT PROJECT FUNDING AND FINANCE

- Grants to community energy groups to support early-stage projects
- Partnership grants for local government to develop joint projects with local community groups
- Construction loans and a Local Investment Fund

Full details - including GBE's investment allocation - will be published in the **GBE Capital Toolkit** launching in Summer 2026.



GREAT BRITISH ENERGY LOCAL POWER PLAN



2026

February 2026:

LPP launched +
GBE Local
Product Sprint
begins

Spring 2026:

Shared
Ownership
template +
guidance
First partnership
announced

Spring 2026:

First grant
schemes
launched

Summer 2026:

Pilot projects to
test and
demonstrate
GBE Local
products

Autumn 2026:

GBE Local
Product Portfolio
launch



Contact me

katherine.rooney@westofengland-ca.gov.uk



Connect with us

[South-West-Net-Zero-hub](#)



Sign up to our newsletter

[Hub newsletter sign up](#)

- 1) Read the Local Power Plan.
- 2) Complete the Expression of Interest (if relevant).
- 3) If you have a potential community energy project (from the community or local authority context) contact us.



Will Reynolds
FRECo and Frome Town Council

Director & Renewable Energy Coordinator



- Population 30k
- Slightly younger demographic than UK average
- Slightly higher percentage of residents in social housing or receiving benefits than Somerset & UK average
- Slightly fewer charities than Somerset average (3.1 per 1000 vs 4 in Somerset)
- More parks than UK average (4 within 1km vs 2)
- Lower energy demand and more energy efficient dwellings than Somerset average

From Renewable Energy Community

- CBS
- 9 Directors, including previous councillors
- Founded 2015 through Sustainable Frome, supported by BWCE
- Supportive environment

- 2 rooftop arrays installed in 2016
 - Medical Practice 150kWp, Football Club 50 kWp
 - Behind the meter, with FiT
 - Community Share Offer in under a week, 70 shareholders
- Community Fund £14k

- Several feasibility studies, but struggled to get projects built:
 - Microgrid, Solar Farm, Hospital
 - Schools, Wind





Parish council

- Consultee & lobbying to County Council
 - Statutory duty: Allotments
- 17 Councillors, led by IFF since 2011
- 40 staff
- Town Hall
- Green spaces devolved from Somerset Council
- *Frome Town Council Plan 2025-27 & Work Programme*
- Resilience team of 5
 - Energy & Retrofit advice, Reuse, Renewables
- Maintain Green Spaces & help keep Frome clean
- **Promote renewable energy**, sustainable transport and recycling
- Support community orgs and initiatives, including grants
- Planning consultee
- Work towards making Frome an independent and environmentally-sustainable town

A close-up photograph of two hands shaking in a firm grip, symbolizing collaboration. The hands are positioned in the center of the frame, with the fingers interlocked. The background is a blurred outdoor setting with white lines on a grey surface, possibly a tennis court. The lighting is bright and natural, suggesting an outdoor environment.

Informal Collaboration

- Shared values & aims
- Individuals & relationships
- Staff crossover

Collaboration Agreement

- BWCE & BANES

What do you BOTH want?

Remember to look at both sides

How does *everyone* benefit?

- CE aligns with council's agenda
 - Bill savings
 - Local wealth building
 - Environment
- Cheaper way to achieve installations
- Staff work
- New Projects
 - Access to council property/land
 - Offtaker
- Credibility
- Introductions & Connections
 - Local businesses

Overcoming Blockers

Community Energy Pathways
Guide to Community Solar on Council Assets

Delays often signal blockers

- Resources
 - Staff time/knowledge
 - Funds
 - Conflicting (political) priorities
 - Hands tied (eg planning)
- Resources
 - Time
 - Knowledge/Skills
 - Funds
 - Access to sites
 - Connections with offtakers



Informal Collaboration

- Shared values & aims
- Individuals & relationships
- No Collaboration Agreement

Staff crossover

- FRECo 'present' in FTC knowledge, esp. in climate team
- Report on FRECo activity alongside FTC workstreams at all levels

Two way relationship

- Both know about barriers and opportunities

Be mindful of conflicts of interest

Concrete examples:

- Small amount of staff time:
 - Admin (eg meeting organisation)
 - frees up volunteer time (eg project development)
 - Maximises volunteer engagement
 - Some project development (where not otherwise possible)
 - eg schools modelling
 - Duplicate duties
 - eg policy landscape,
- Meeting space (esp AGM), Registered address
- Council first shareholder
- Connections & Introductions
 - Access to council staff
 - Unlocked external support
eg CE Go (discussed with CSE in FTC meeting), ELN, Wessex/Somerset networks
 - New projects (eg schools)

Council Benefits:

- More renewables, off balance-sheet
 - Stronger community networks
 - FRECo very networked with other groups
 - Community fund supports other community groups
 - Community fund supported council energy/retrofit advice service
-
- Community energy provides 12-13 times more local value than 100% commercial models (*Capener, 2014*)
 - Community wind farms return 34x more per MW locally than commercial ones (*Aquatera, 2021*)
 - Buying local community-generated electricity can deliver 3x the local economic value to buying non-local, commercially generated electricity (*Devon Community Energy: Socio Economic Assessment, 2021*)



LOCAL AUTHORITY & COMMUNITY ENERGY:

RETROFIT

Since 2010, raised £25 million to build out 14.6MW, matching annual demand from 5,200 homes



Longstanding Cooperation Agreement with B&NES Council. Grown from a voluntary organisation to £4 million turnover, 30+ people, strong project pipeline

- **Renewables:** 6 ground mount & 37 rooftop solar systems, mainly schools
- **Local Supply:** Energy Local & innovation pilots
- **Home Energy:** Paid services for Self-Funding households. Grant funded projects partnership with B&NES & Retrofit West CIC
- **Community Fund:** Donated £470k to support action on carbon reduction & fuel poverty



Home Energy Partnership Working

Non-grant-eligible (Self Funding) Households

- Produce vast majority of residential emissions. Wide range of incomes. Little government support = hard for Councils to address.
- Knowledge second biggest barrier after cost
- Trusted peer or non-profit information is powerful



Home Energy Partnership Working

Joint grant projects: Inspiration and support

Green Open Homes 2023 & 2024:

Led by BWCE, homeowners in Bath, and also North East Somerset villages, opened homes to residents. 600+ visits each year

Green Heritage Homes 1:

BWCE, B&NES Council, Bath Preservation Trust, B&NES Council, Centre for Sustainable Energy

Retrofit and conservation professionals

Innovative 'Level 0' pre-application advice service for retrofit of listed buildings. Joint visit by BWCE and Conservation Officer. 40 Listed Building Energy Champions

Green Heritage Homes 2:

Led by B&NES. Includes listed Social Housing



Home Energy Partnership Working

Grant-Eligible Households

- Service Level Agreement to promote HUG grants through community networks
- Future - Warm Homes Plan?
Early-stage exploration of multi-tenure Area Based Retrofit opportunities
- Also – working together to harness the power of community with the Community Energy Network...





Community Energy Network

Bath and North East Somerset

- £1.5m award from National Lottery's Climate Action Fund for 2024-2027
- 5MW new community owned generation projects
- 50 Energy Champions trained in communities
- Cross-referral for home energy advice between 30+ frontline services via Community Wellbeing Hub

The Community Energy Network is a partnership involving:



Funded by:





What does Energy at Home offer?

- Energy advice through the Community Wellbeing Hub
- Energy cafés and events for in person information and support
- Signposting to Retrofit West's services, including free home visits and discounted retrofit assessments
- Online resources signposting to energy saving advice, retrofit support, funding/ grants, how to reduce mould and damp etc.
- Support from Energy Champions



Energy in Your Community

Community Energy Network

- Working with the Centre for Sustainable Energy (CSE) and Bath and West Community Energy
- Delivering a series of workshops and activities that explore the potential for community-owned renewables, including the local benefits.
- 3 areas are being continued from a pilot in 2022
- 3 new areas selected by grouping together organisations that responded to a call out for interest in the project



ANY QUESTIONS?

Future Energy Landscapes

Wessex Community Energy Network

June 2026



Future Energy Landscapes

Deliberative Engagement



- FEL is an example of a deliberative *engagement* process. This is different from traditional *consultation*.
- Deliberative engagement is a structured process that aims to bring together diverse, representative groups of people to learn about, discuss, and weigh issues in depth before forming informed recommendations or decisions. It aims to foster understanding, trust, and consensus-based solutions.

Learning: People learn from each other, hearing different perspectives.

People also hear from experts and learn from evidence, facts and different viewpoints.

Deliberation: People start to tackle issues together.

They try and understand the positions of others and collectively consider trade-offs that must be weighed up.

Decision-making: People move towards collective conclusions.

Reaching a consensus is explored but is not necessarily the goal. People are encouraged to make decisions which can be prioritised or voted on.

Consent, not consensus!



Future Energy Landscapes

Aim: Explore how you feel about a community energy project in your area, and how it could benefit your community.

How do we do this?

- **FEL is a process**, comprising of a workshop and follow up engagement with a local community.
- We ask local communities if their area can play a role in the national delivery of renewable energy projects – **focusing on community owned projects, including wind turbines and solar farms.**
- Participants consider how they **value their landscape** (positively and negatively).
- Participants will consider and deliberate potential locations for projects through **engaging materials.**
- Participants are asked how they think they, as a **local community should benefit**
- We discuss **what needs to happen to enable them to support renewable energy projects** in their area.



Why?

- National need to generate more energy from renewable sources.
- Energy costs for consumers are soaring, and many people can't afford to heat their homes.
- Public support for renewables is high but often disappears when projects are proposed in the vicinity of where people live.
- Better public engagement processes are vital in order to roll out renewable energy projects at scale.
- **FEL looks at opportunities to tackle both climate change and fuel poverty through the delivery of community renewable energy projects, by working directly with local communities.**



Our Current Projects

- CSE is running FEL in partnership with local authorities and community energy organisations funded by the Energy Industry Voluntary Redress Scheme and the National Lottery.
- This includes 5 local authorities in the West of England, where we aim to **identify around 15 community energy projects for further feasibility development that have public support.**
- You can find out more about what FEL, current projects, and how to run FEL in your area, through

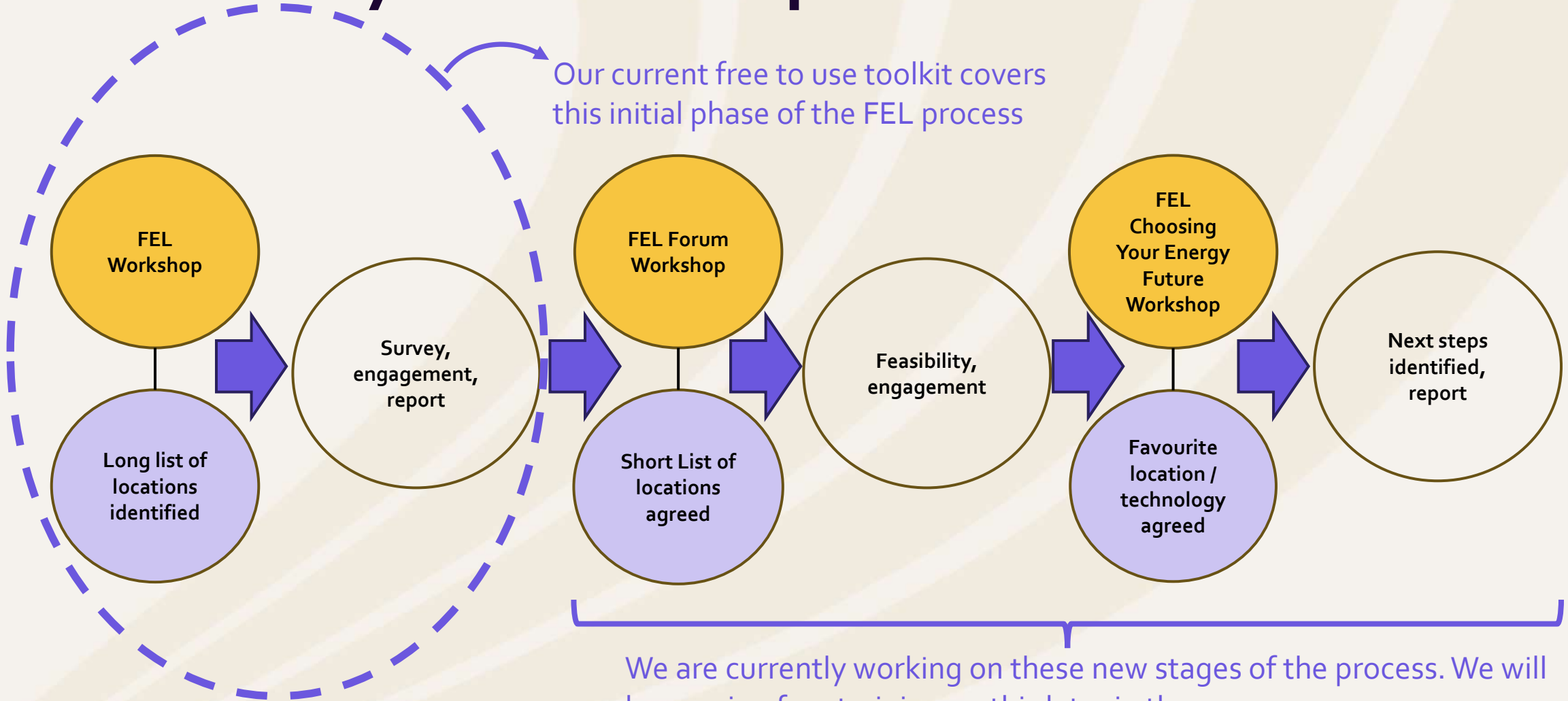
www.fel.org.uk





A summary of the FEL process

Our current free to use toolkit covers this initial phase of the FEL process



We are currently working on these new stages of the process. We will be running free training on this later in the year.

12 Month Process (ish)





What CSE has done so far in the West of England, working with our partners

- 27 in-person workshops
- 76 other engagement sessions
- 4 dissemination events
- 1 Lego Wind Turbine
- **Over 2,600 people engaged with so far.**

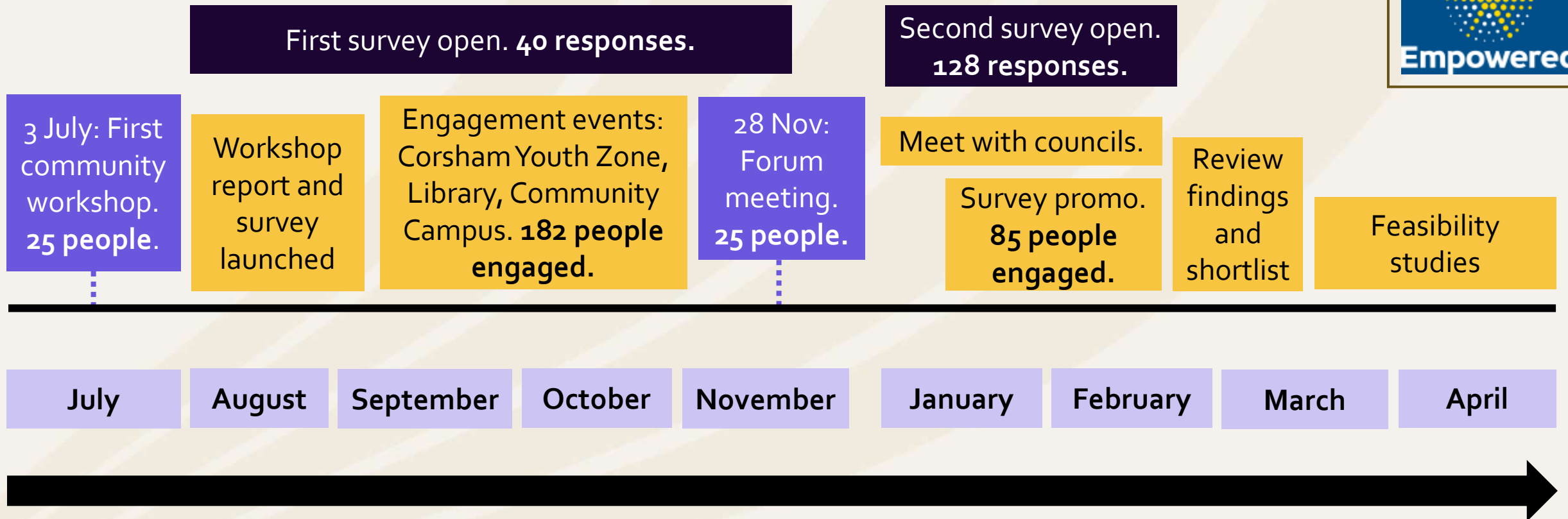




Case Study



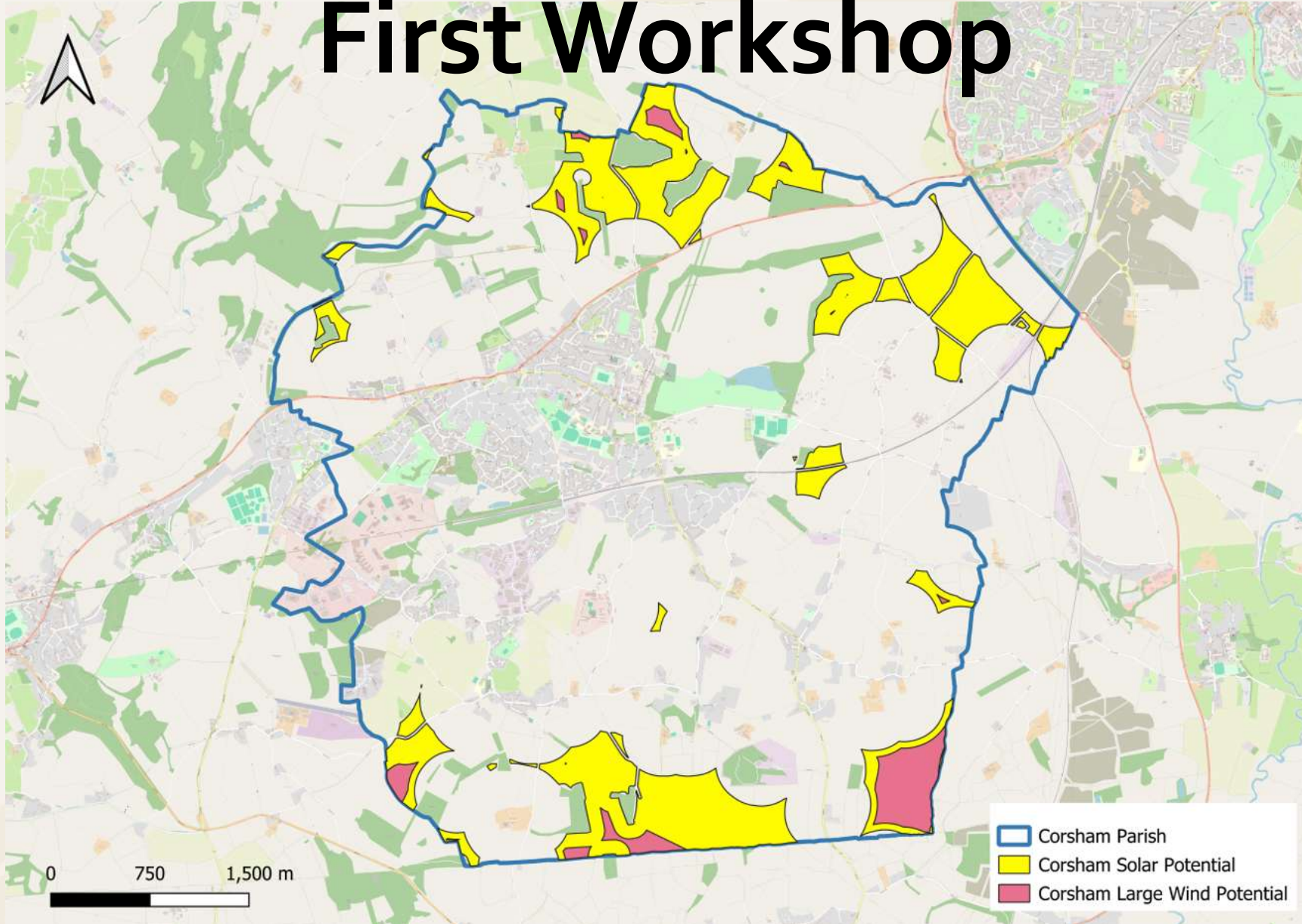
Case Study: Corsham, Wiltshire



Narrowing down the areas of search, based on community feedback, as the process goes along.



First Workshop



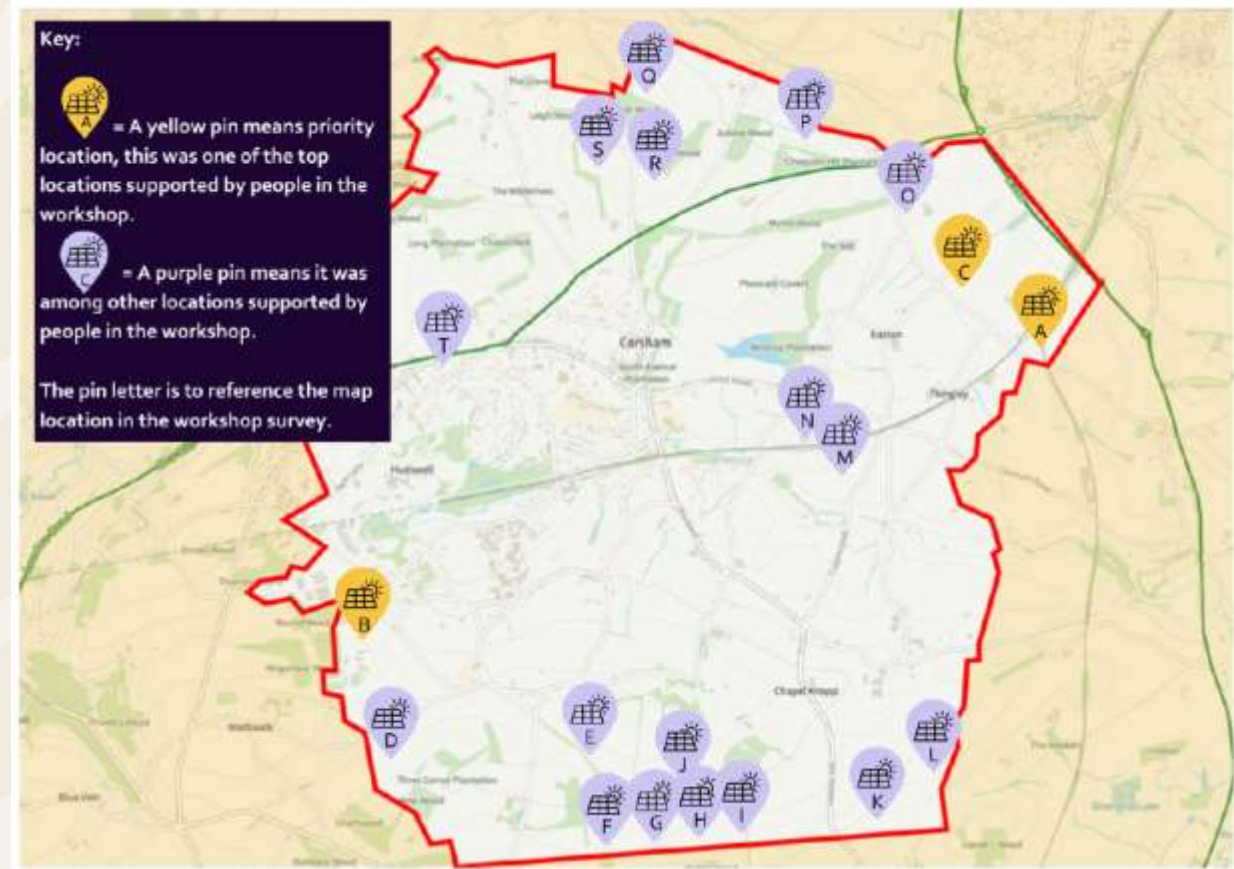


First Workshop Outputs

Suggested locations - wind turbines



Suggested locations - solar farms





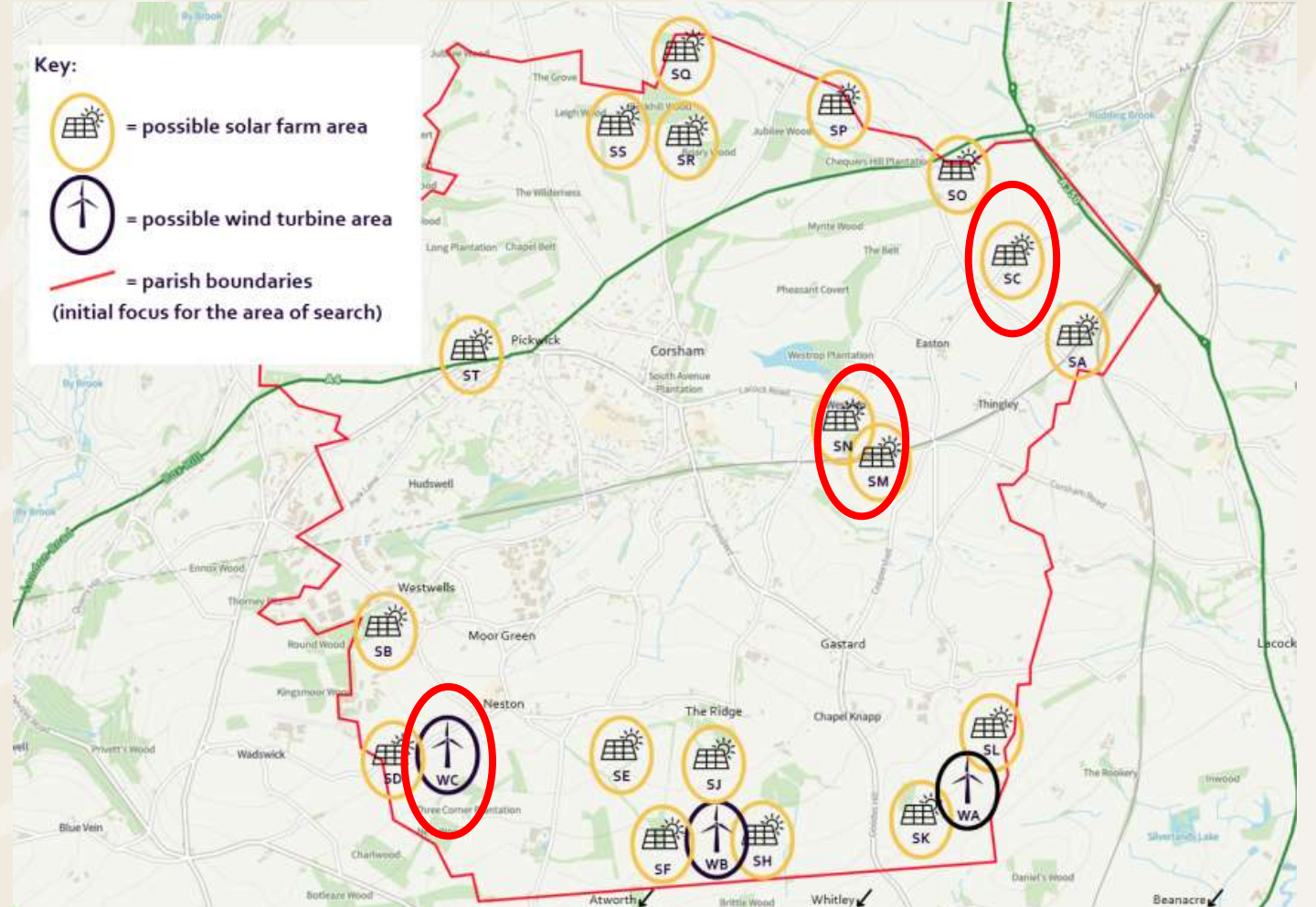
Corsham Youth Zone

- Understood the importance of young people having their voices heard
- A lot of enthusiasm for renewable energy
- Generally, didn't want things near houses, were worried about impact on views, and their ability to access green spaces once built
- Great ideas around a community benefit scheme:
 - BMX park / skate Park upgrades
 - Reinvesting in more renewables
 - Spread it equally in the community
 - Use it to reduce peoples' heating bills
 - Funding for local schools





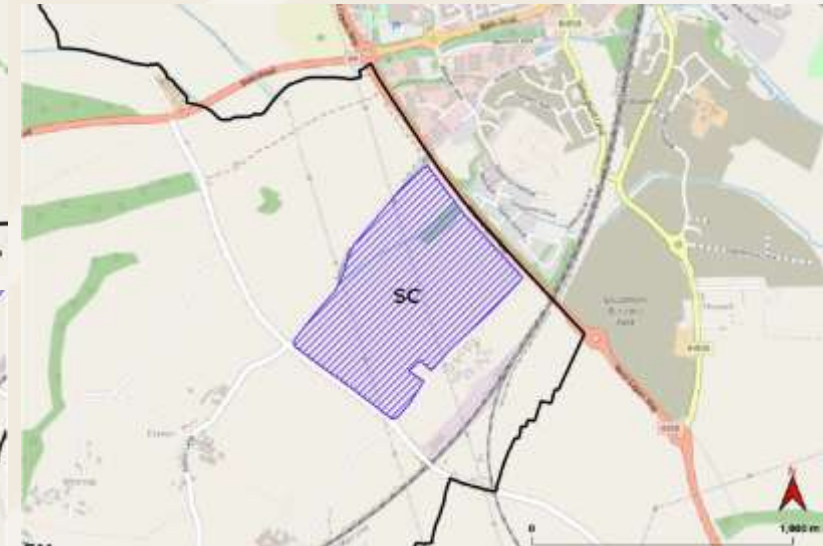
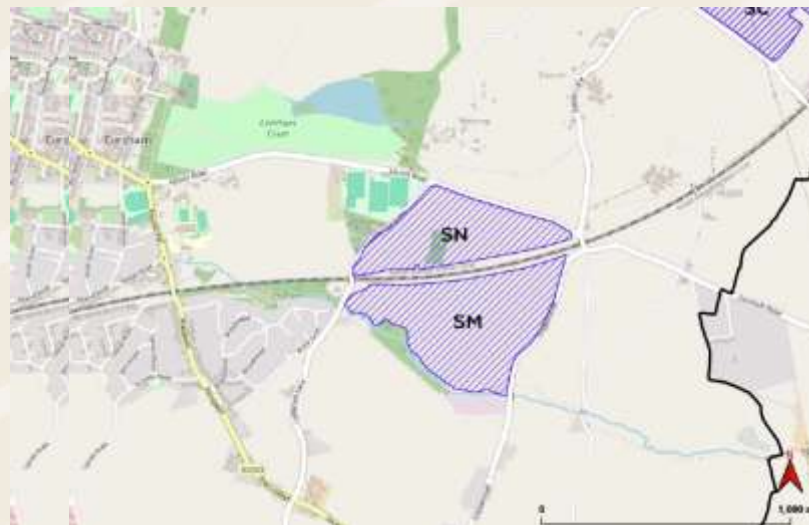
Second Workshop Outputs





Pre-Feasibility Reports

- Wind turbine was considered to be very challenging with significant barriers
- Solar locations all offer potential for development; some have less planning constraints, some have more grid potential





Final Workshop



Three areas of focus:

1. Discussing if there are any areas the community is interested in doing further development work
2. Views on models of community ownership, if a project was to go ahead
3. How a working group could be established to co-ordinate future stages

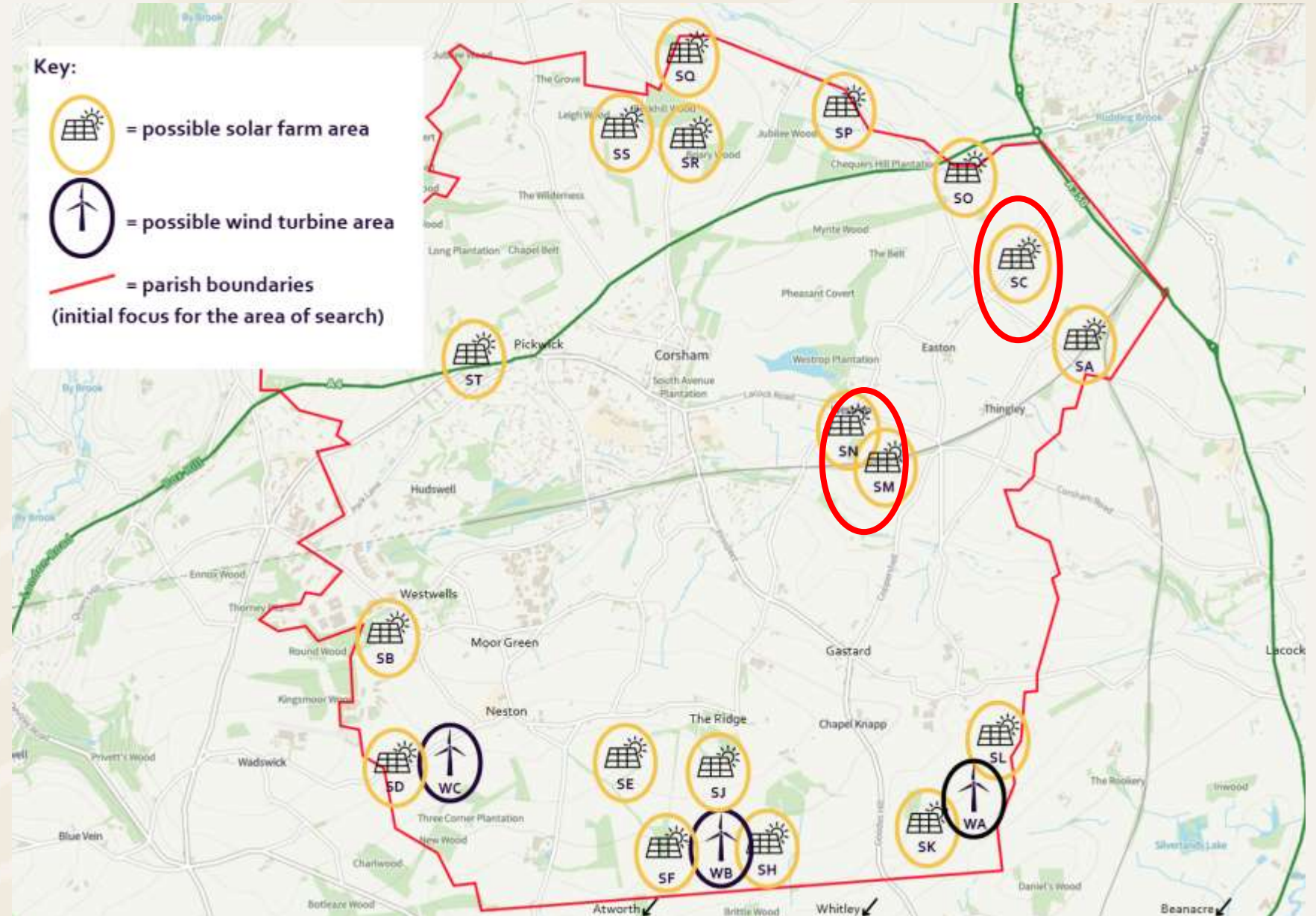




There was deemed to be **sufficient interest** from the local community in finding out more about possible options, whilst also addressing concerns about potential locations.

There is a clear group of people who would like to be involved in driving a community energy project forward and bring benefits to the local area (**37 people interested in being part of a working group**).

2 locations were agreed upon to be prioritised for future investigation, leaving the door open for other opportunities.





What we have learned

There is local enthusiasm for a community energy project, but also real concerns that would need to be considered and addressed. Residents are capable of weighing up pros and cons and can identify potential community energy projects, if given the time and space to do so, with the right level of support.

Residents want to embrace renewables but feel left out of the decision making.

We want to keep solar as less visible as possible for those who live nearby and avoid good agricultural land.

I fully support local, green energy projects.

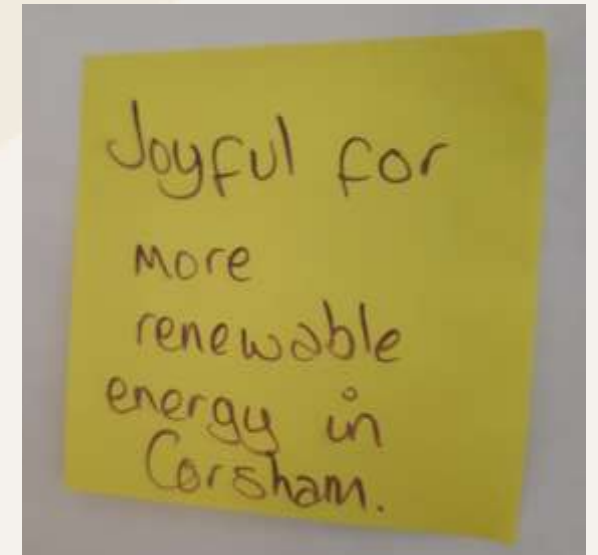
We need to stop ruining the countryside, losing farmland, losing wildlife. These schemes do not benefit us, nor save us money off our bills. There are far too many in this area already.

Much care needs to be taken in ensuring any development is done sympathetically taking into account those most affected by it.



What's next for Corsham?

- A working group of local residents will continue to work with Bath and West Community Energy to take forward a community energy project.
- The group will need to agree on certain things, such as:
 - It's objectives
 - It's membership structure
 - How it will work (Terms of Reference)
- Together, they will focus on areas such as:
 - Further discussions on **preferred site selection and discussing with landowners**
 - **Developing funding applications** for further feasibility work (e.g. GB Energy Community Fund)
 - **More community engagement**
 - **Community ownership options** and how to **maximise benefits** to the local community





What we have learnt





Current learnings

1. Local knowledge is critical.
2. The response locally is completely dependent on the area.
3. How to communicate and frame what you're doing is vital.
4. Pre and post workshop engagement is just as important, if not more so, than the workshop itself.
5. Don't rush, go at the pace that the community needs.
6. The process is good at generating potential project ideas, and getting communities interested in them.





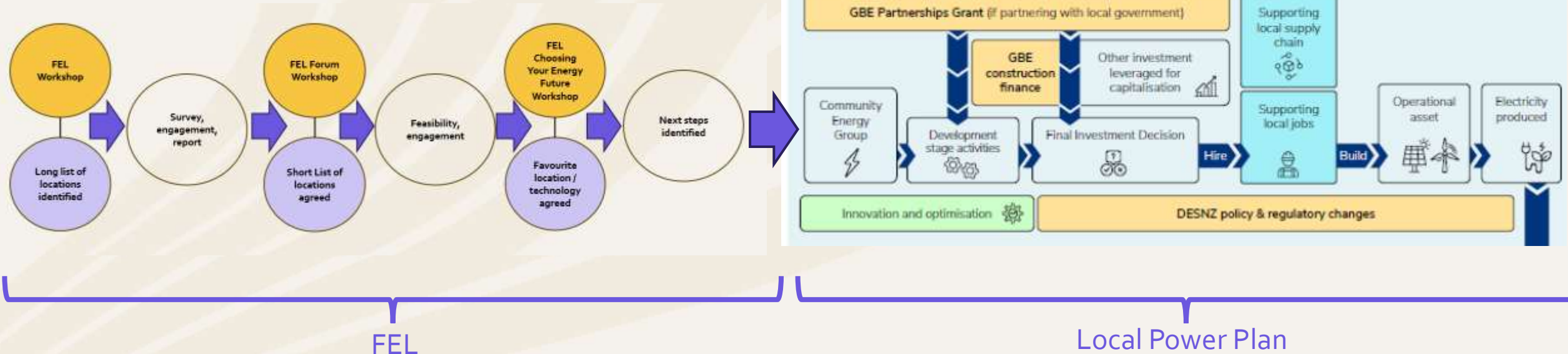
What's next





Creating a project pipeline

- We would like to see FEL outputs informing future GBE CEF applications.
- FEL illustrates the work required to even get to CEF Stage 1 – but the process has the potential to create a pipeline of project ideas.





We would like to see more groups independently running their own FEL projects

- Undertook training by CSE
- Completed 20+ workshops independently, with funding from Local Authorities and South Downs national Park Authority
- Engaged over 700 people so far





Getting feedback from you

- Is FEL something that could benefit you or your community?
- Do you have any future project ideas that we could collaborate on?
- We will be putting on free FEL webinars later in the year – are you interested in joining?
- We can provide bespoke, in person, training sessions , as a paid for service – would this be helpful?
- **If the answer to any of this is yes, then please contact me: neil.best@cse.org.uk**
- You can find out more about what FEL, current projects, and how to run FEL in your area, through www.fel.org.uk

Q & A

SHARED COMMUNITY OWNERSHIP



Paul Phare
Development Manager

paul@energy4all.co.uk



Alex Lockton
Director

Alex.lockton@empoweredprojects.co.uk

Today's content

- Recap of what is shared ownership
- Recap of what are the main types
- How and when to engage with a commercial developer
- What good partnership looks like
- What should you get help with
- Where can you get help
- Recent experiences

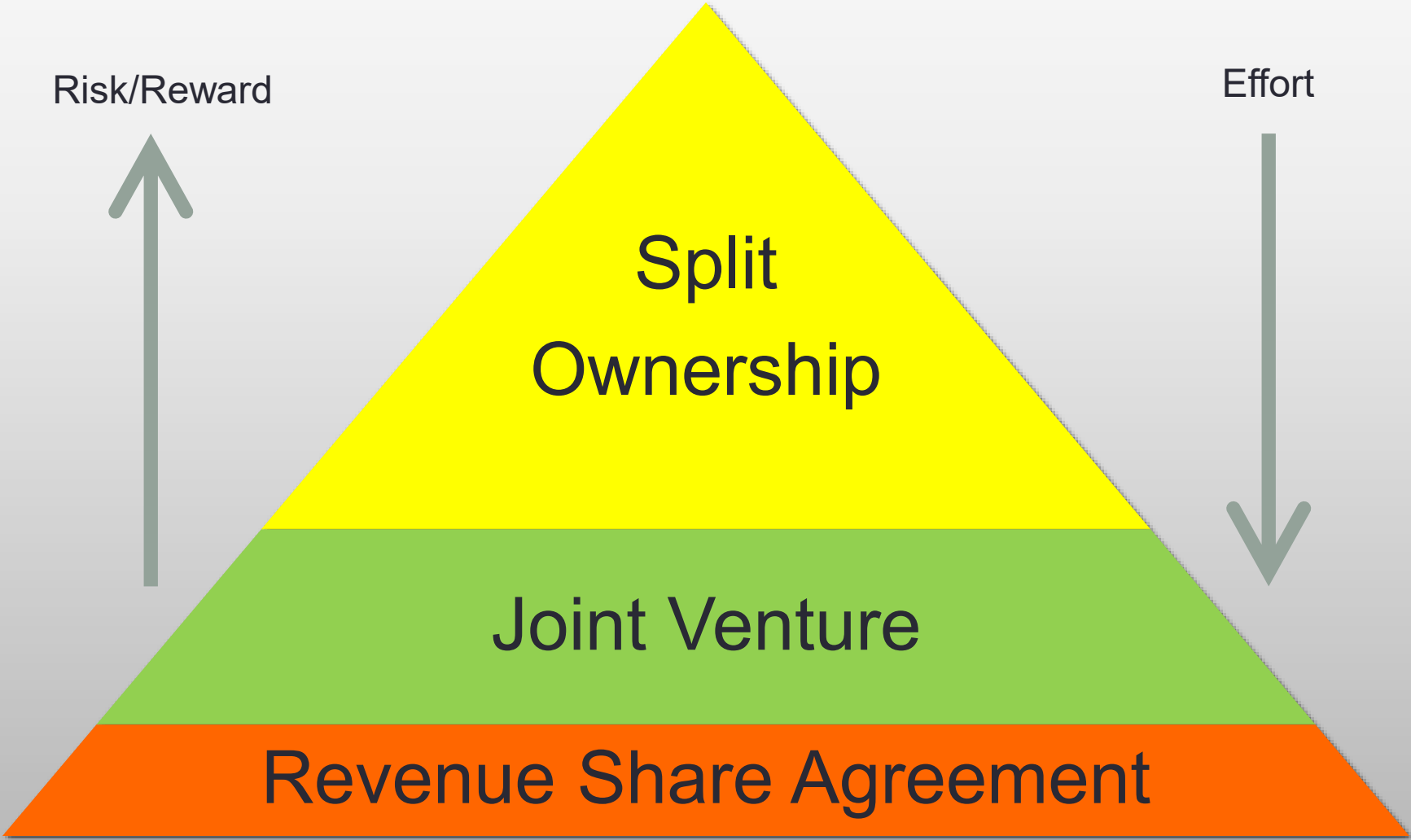
What is Shared Ownership between the Community and Private Companies?

- It is where an opportunity is offered by a developer of a commercial scale renewable energy project for a proportion of that project, or the value it generates, to be owned by members of the local community
- Typically, a share offer is launched by a local co-operative, with members of the local community given priority on shares
 - Loans could also be available from GB Energy

Shared Ownership

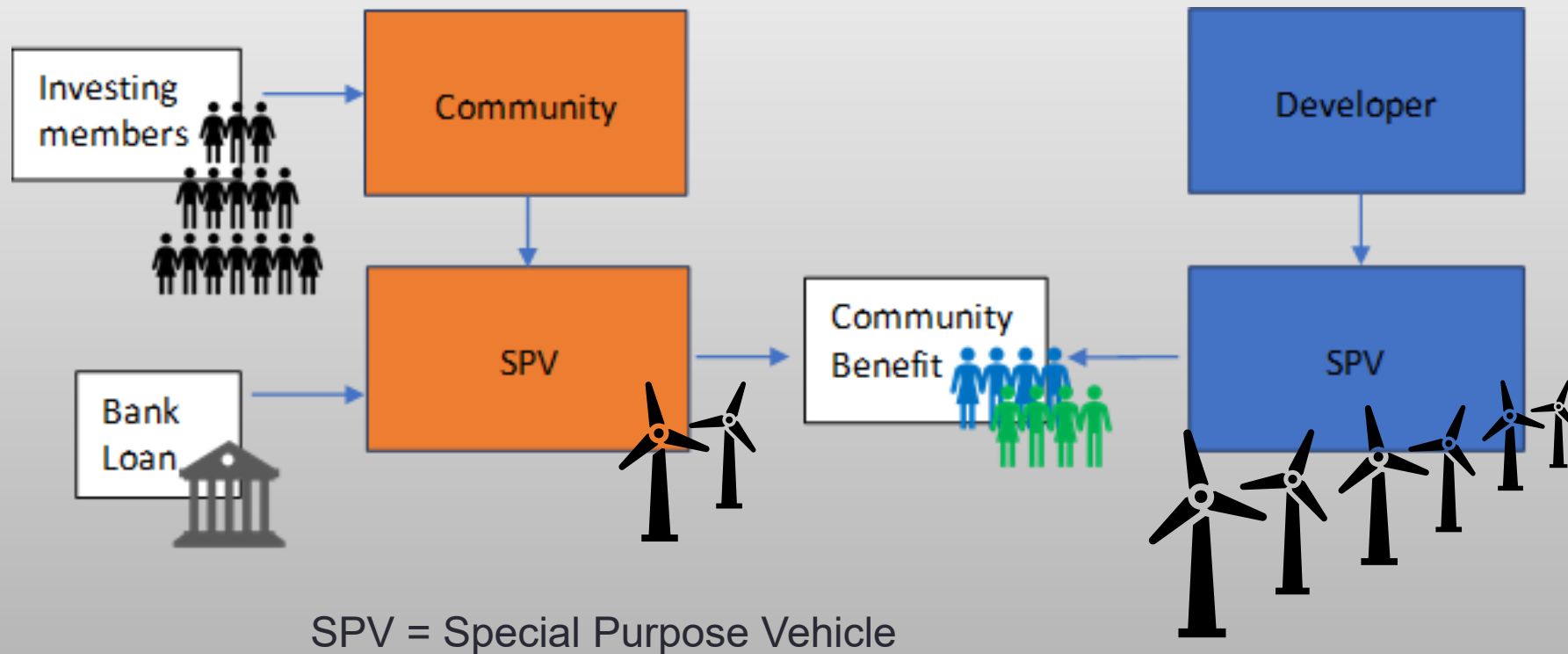
- A genuine share of the project
- Adds value to the developer and the community
- Invested individuals are engaged
- Split ownership greatest reward but complex
- A community development partner is invaluable
- Government support for shared ownership
- The only way to achieve community energy at scale

Hierarchy of Shared Ownership



1. Split Ownership

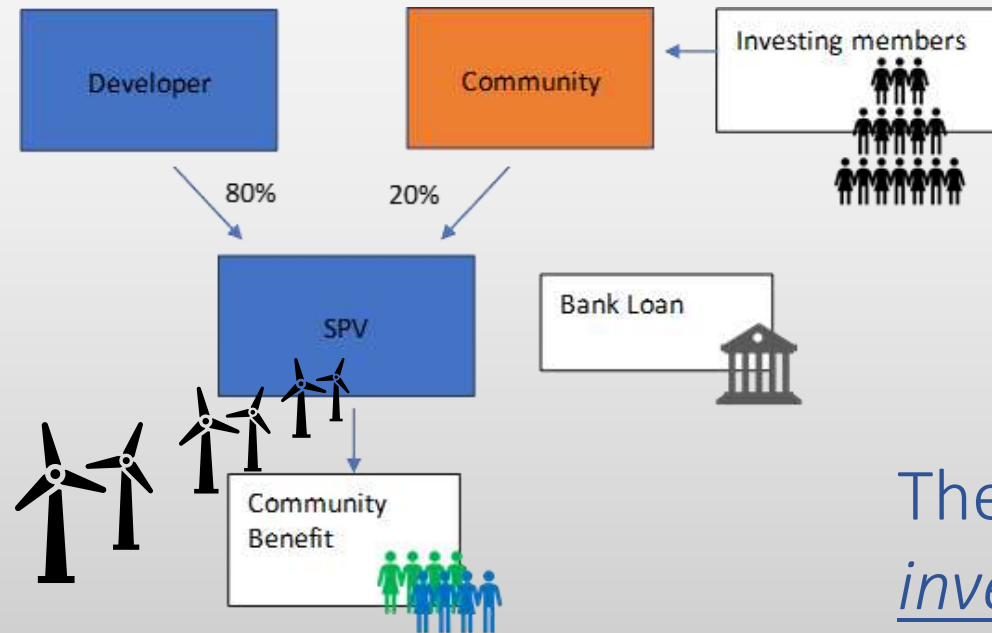
The community entity owns an energy asset (at least one wind turbine or % of a solar farm) in a separate legal entity with its own grid connection, financing arrangements and power purchase agreement.



Split Ownership – Key Features

- Assets are fully owned by the community
 - Control of the business
 - Can sell the electricity
 - Distribute the profits
 - Can access loan finance
- Genuine partnership with the developer pre-planning
 - GB Energy (CEF) development funding?
 - Share cost / Share risk
- Risk of not raising capital
- How to value the asset – Cost+
- Separate grid connections
- Complicated legal agreements
 - Need an experienced development partner

2. Joint Venture

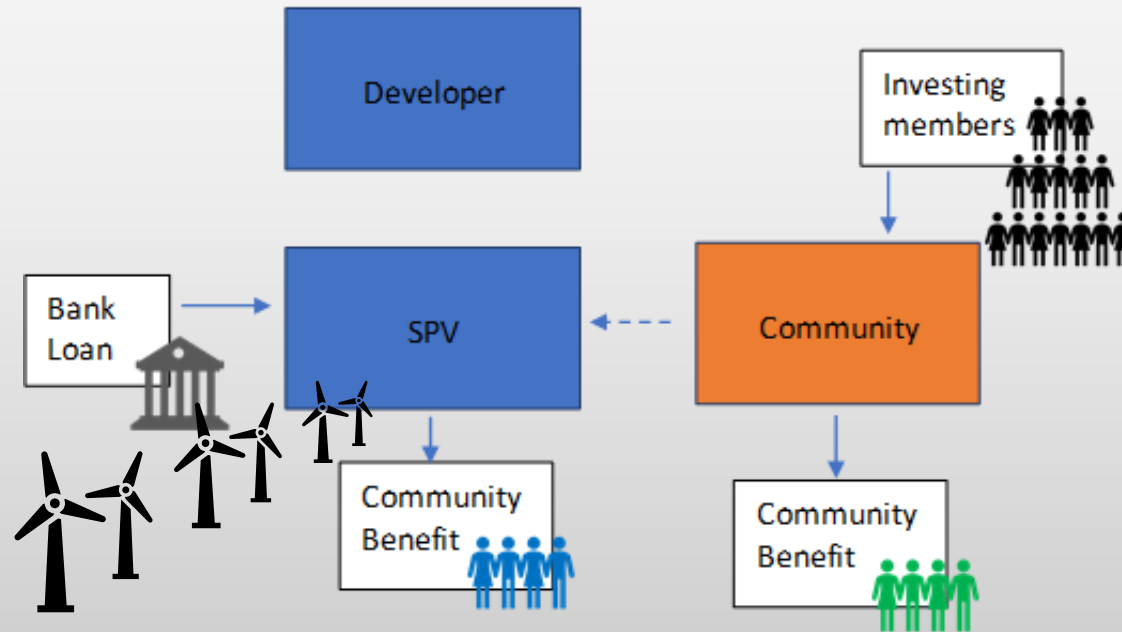


The community entity invests in the project and owns a percentage of the shares.

Joint Venture – Key Features

- One SPV
 - One set of contracts
 - One grid connection
 - One lender
- Shareholder's Agreement
 - Minority shareholder
 - Less control, although community representative can sit on the board
 - No say in electricity sale
 - How to price the share
- Returns to Community Members
 - Depends on financial structuring
 - Potential for a larger investment than Revenue Share
- Not a community owned business

3. Revenue Share Model

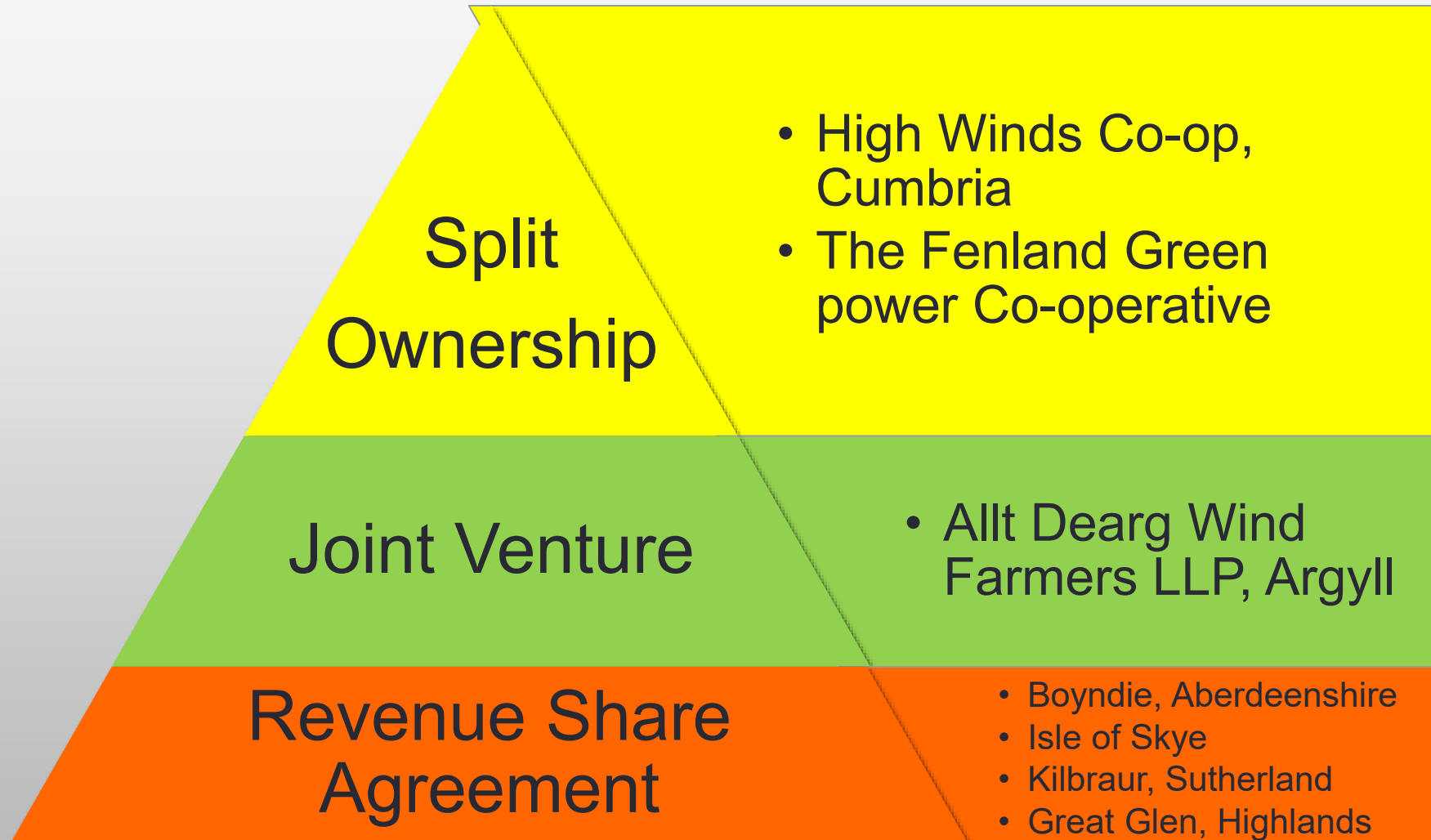


An agreement entered into by the community entity with the SPV. The community entity purchases a percentage of the wind farm's net revenue. There is no ownership of assets or shares

Revenue Share – Key Features

- A simpler model for both community and developer
 - Least effort and risk for community but less potential income
 - Developers don't like complicated ownership structures
- No ownership of the private company assets
- A share of project income, less operating costs
- No involvement in project finance
 - Local community invited to invest on project commissioning
 - No project construction risk
 - Return on investment starts from day 1 of the investment
 - Price of share is negotiable
- Cannot raise debt finance on a share of revenue
- Little engagement with the operation of the project

Examples of Shared Ownership





Great Glen Energy Co-op



Kilbraur Wind Energy Co-op



Boyndie Wind Farm Co-op



Isle of Skye Renewables Co-op

How and when to engage with a commercial developer

- Pre-planning application
- During planning application
- Post planning determination
- Pre-appeal

What good partnership looks like

- Openness
 - Learn about each other's motivations, financing and structuring criteria
 - Patient with each other
 - timing or pace either party can work at varies on both sides,
 - Listen to reasons for differences or concerns
 - Financial model open book
 - Can do attitude to make it work, solve problems together

What should you get help with

- Legal help
 - Property, commercial purchase, grid, planning, construction (EPC) and maintenance (O&M), power purchase or CFD contracts
- Technical support from a technical advisor
- Financial model
- Fundraising and debt finance
- Power Purchase or CFD support
- Support with negotiation and managing the process

Where you can get help

- Learn from existing SO projects
- Be willing to collaborate or JV with other CE groups or Bencoms
- Engage community energy supply chain
- GB Energy templates
- GCEF funding
- GBEnergy new financing offers???

RECENT EXPERIENCES

SHARED COMMUNITY OWNERSHIP



Paul Phare
Development Manager

paul@energy4all.co.uk



Alex Lockton
Director

Alex.lockton@empoweredprojects.co.uk

Eden Renewables WCEN Spring Conference

JUNE 2026



Eden Renewables Group

- Solar, onshore wind & BESS developer in UK, US, and sub-Saharan Africa since 2013*, 2018 and 2018 respectively; and South Africa since 2024
- Highly experienced, internationally recognised team of 39
- Multi GWs in development across territories
- Deep technical understanding of clean energy market including grid and site design
- Recognised industry leader in CSR in UK and US on:
 - multi-functional land use & biodiversity programme
 - education programme
 - community benefits, ownership and engagement

*Eden team operated as Solstice Renewables in UK until 2016

Community & shared ownership experience

- UK's leading developer of shared ownership and community solar projects
- Developed and key advisers on > 10 community projects totalling
 - 49.6MW consented, of which
 - 22.8MW operational,
 - 6.5MW did not proceed (2015/16 cuts), and
 - 21.8MW at RTB approaching FID
- Structured numerous 'split asset' incl split grid connection & shared GridCo
- Innovating 'split asset' + 'shared revenue' to de-risk wind SO
- A leading community solar developer in NY State, USA

Shared Ownership portfolio

PROJECT	LOCATION	TECHNOLOGY	TOTAL MW GENERATION	MW COMMUNITY	PROJECT STATUS / TARGET FID	COD	COMMUNITY GROUP
Forest Gate	Wilts	PV & BESS	54	10.8 (20%)	RTB FID Q2 2026	Q2 2027	Zero North Wiltshire and Bath & West Community Energy
Red Barn	Wilts	PV & BESS	60	12 (20%)	RTB FID Q2 2026	Q2 2027	Zero North Wiltshire and Bath & West Community Energy
Bettyhill Ph2	North Scotland	Wind & BESS	45	9 (20%)	RTB FID Q2 2026	Q4 2027	Farr North Community Dev Trust
Lightwood	Gloucs	Solar & BESS	45	9 (20%)	In planning	???	Forest Community Energy, Gloucestershire Community Energy Coop and Gwent Energy CIC
Moss Wood	Fife, Scotland	Solar & BESS	150	20 (20%)	In planning	2030	Seeking local partner
Blackthorn	Wilts	Solar	60	12 (20%)	In planning	???	Seeking local partner
TOTAL			304+	RTB 21.8 In Dev 60.8+			

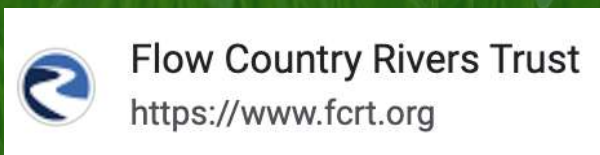
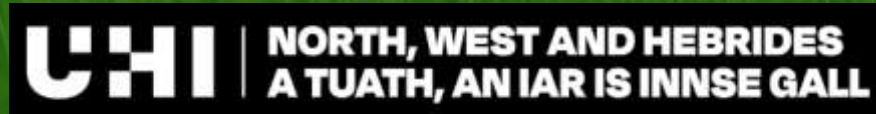
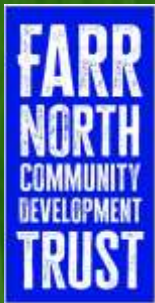
Forest Gate Community Owned Additional Benefits

- **Signed MOU for 20% / 10.7MW** with **North Wiltshire Community Solar** (JV between **Zero North Wiltshire** & **Bath and West Community Energy**)
- Heads underway covering complete structure and doc pack
- **Split Asset** structure → full independent ownership
- Estimated **£2 million** for project life surplus into CBS
- Target sign Conditional Purchase Agreement coterminous with project FID, April / May '26 with whole doc pack appended in agreed form



Bettyhill Wind Farm benefits & commitments

- **Community Benefit Fund of £250,000 per annum**, index-linked for project life
- **Electricity discount scheme** for local residents
- Funds shared amongst 7 neighbouring community councils
- **Education Benefit Fund of £5,000 per annum**, index-linked for project life
- **Up to 20% shared ownership** with Farr North Community Development Trust – estimated **over £8 million for project life**



Community Ownership Adds Challenges for the Developer

Adds a lot of extra work without any material financial benefit

- Need community group who understand the challenges
- Community group need to demonstrate benefits / assistance to developer
 - E.g, planning support
- Lack of available template documents for developers / clear pathway,
 - Eden working to create templates

It's a Long Process

Extended timeframe and multiple challenges that the projects can face, e.g. planning and grid delays

- Forest Gate has taken 6 years down the line from first consultation
- Find a champion within a commercial developer
- Its a long road that needs resourcing

Development timeline - Bettyhill Ph2

Wind



Legal Structuring Impacts the Project

- **Split asset** - easier for the all parties

Community group needs experienced partners who know how to run solar farm

- **Joint Venture** -

Many community groups will prefer this but commercial owner as above may not consent

- **Shared revenue** -

Can make it more difficult as no ability to secure debt against infrastructure

Legal Structuring Impacts the Project



Post Construction

- Long term relationship with commercial funder - often not the developer
- Split contracts - O&M Asset Management
- Shared Grid Co
- Landlord and planning obligations
- Biodiversity Net Gain
- Coordination and contribution to Community Fund
- Offtake agreement / PPA / CFD (impact on grant funding)



Q & A

Before you go to lunch ...

- Next WCEN Meeting - Online AGM 30th September

Vacancies on Steering Group

- to be eligible you need to be an active member of an existing community energy group in the Wessex region
- Terms of Reference are on our website <https://wessexce.net/about-us/>
(click on the link to 'Constitution')

Email wessexnetwork@cse.org.uk if you would like to stand



Ewan Corley

Younity

Connecting skilled and committed volunteers with community energy groups

Community Energy Connect is a free volunteering platform tailored specifically to the needs of community energy groups that uses advanced skills-matching technology.

It's the only volunteering platform in the UK dedicated exclusively to community energy organisations, developed for Younity in partnership with the digital volunteering company Do IT.



Community Energy
Connect has filled
over

90%

of posted
opportunities

and is introducing new and exciting
volunteers to the sector

Community Energy Connect is finding volunteers for wide variety of roles that require specific skills such as project managers and financial modelling, through to creative positions and general volunteering opportunities.

Building the future sector base - 55% of volunteers placed are under 30.

We're committed to building partnerships with corporates and universities, connecting them to the world of community energy through Connect.



Solar Project Development
Officer



Delivering flyers door to door



Fundraising identifying
and bid writer



Our partners at Do It Life

A social enterprise and digital volunteering company who specialist in volunteer and corporate social responsibility (CSR).

They've been operating since 2002 and has a volunteering database of over 750,000 volunteers.

Official app provider for The Big Help Out during the King's Coronation Celebrations in 2023, which enabled more than 6 million people to get involved in 2023.





North Lincolnshire Community Energy

Secured a volunteer to support with digital media creation

“Community Connect has been a great support in building up our volunteer opportunities for our community energy group. It is an easy-to-use platform which has allowed us to be very specific in our volunteer recruitment so that both sides get the maximum benefit from the experience.”



Community Energy London

Secured a volunteer to help find and apply for fundraising opportunities

“We were thrilled to find Nicky via Connect - a highly experienced fundraiser with time to spare! She led a funding application that secured £20k of funding for CEL, and is already looking for more grants. It was an easy process to advertise the task, and we will definitely use Connect again in future.”

Volunteers and groups can expand their skills with Connect Learning, a range of embedded short courses

Community Energy Connect goes beyond supporting volunteers. It can also be used to train new groups through specialist courses on complex topics such as governance, PPAs, and feasibility studies.



Connect Learning also provides onboarding courses for new volunteers, helping them understand community energy, its model, and its benefits, so groups have more time to focus on delivering projects.



Through our corporate partnerships, we are not only bringing in professional expertise but also co-developing detailed courses that are freely accessible via Connect Learning.



How can we support your onboarding?

You can create a free profile for your organisation on Community Energy Connect today and explore the platform at your own pace, supported by our Toolkit resource.

If technology isn't your thing, we offer 1:1 onboarding support to help you set up your profile, understand key features, and answer any questions along the way.

And if you're short on capacity, we also provide a full end-to-end service, supporting you with account creation, posting opportunities, and managing volunteer engagement on your behalf.

Got a question?

ewan@younity.coop,

+44 7907868336

Create a free account



Struggling with capacity issues



Workshops

Licence Exempt Supply & Yunity's Community Power Club

Connie Duxbury, Yunity

Domestic Rooftop Solar

Iris Partridge, Resilience Network

Optimising Community-Scale Batteries to Support Community Energy Groups and the Local Electricity Grid

Yang Lu, Envol Energy

Mine Water Heating

Alex Lockton, Empowered

Closing Session

- Feedback from Workshops

2 Learning Points from each Workshop

- Next WCEN Meeting - Online AGM 30th September

Vacancies on Steering Group

- to be eligible you need to be an active member of an existing community energy group in the Wessex region
- Terms of Reference are on our website <https://wessexce.net/about-us/> (click on the link to 'Constitution')

Email wessexnetwork@cse.org.uk if you would like to stand

Before you go ...

Please complete our short feedback survey

<https://forms.office.com/e/Fu9QBuqCR5>

Thank you for coming!

Wessex Community Energy Network

<https://wessexce.net/>

Contact us: wessexnetwork@cse.org.uk

