

yöunity
Our
coop | octopus
energy



Community Power Club

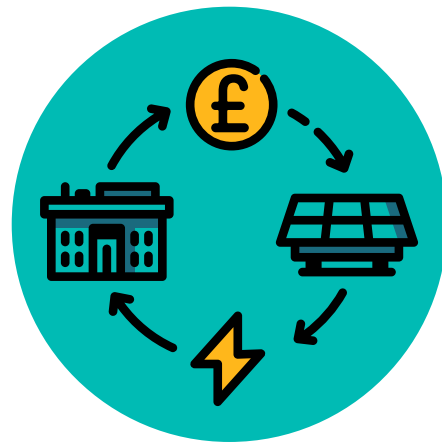
Licence Exempt Supply Offering

Powered by our parent companies



Introducing Younity

Our mission is to supercharge the community energy sector across the UK



Supporting Local
Projects

350

community energy
projects supported



Grant Funding

£80k

across 25 groups



Loan Finance

£1.5m

available



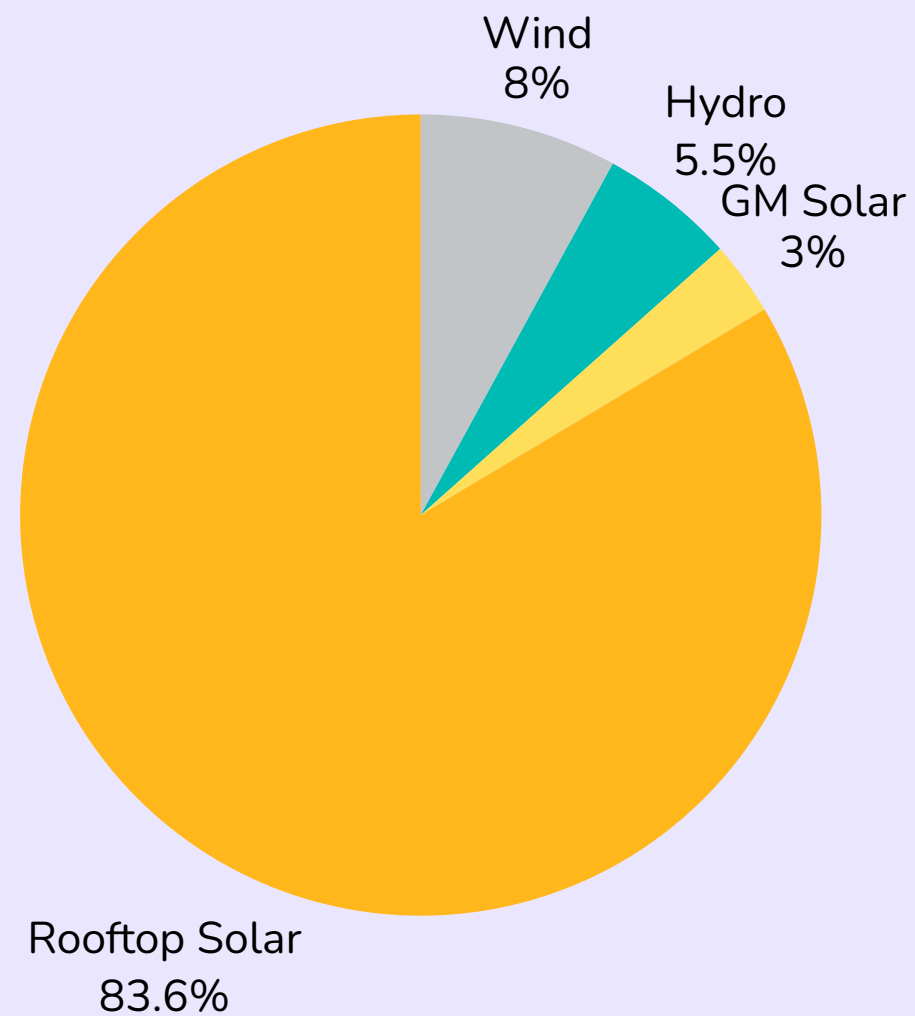
Community Energy
Connect

90%

opportunity fill rate



Younity's Power Purchase Agreements (PPAs)



- We have PPAs with 100 community energy organisations across GB.
- We work with around a third of the sector by volume.
- No project too small!
- Energy from Younity's PPAs ringfenced into the Community Power Tariff.





What is Licence Exempt Supply?

Allows electricity generators to supply directly to consumers **without holding a full electricity supply licence** as set out in the UK's Electricity Order 2001. For community energy generators, there are two important Class Exemptions:

Class A: Small Suppliers

- Small scale generator can act as an electricity supplier
- Generation supply limits apply
- Not available to generation sites receiving RO or FiT export payments

Class C: On Site Supply

- Applies to generation through private wire
- No 5MW limit on supply
- Class C volumes are included in Class A allocation



The P442 Modification

Amends the Balancing and Settlement Code (BSC) allows eligible licence-exempt supply volumes to be excluded from some EMR levy calculations.

What does that mean?

- If a community generator's export is matched to a customer's usage in the same half-hour, that matched volume can be treated differently from normal licensed supply - creating a potential saving for the customer and uplift for the generator.

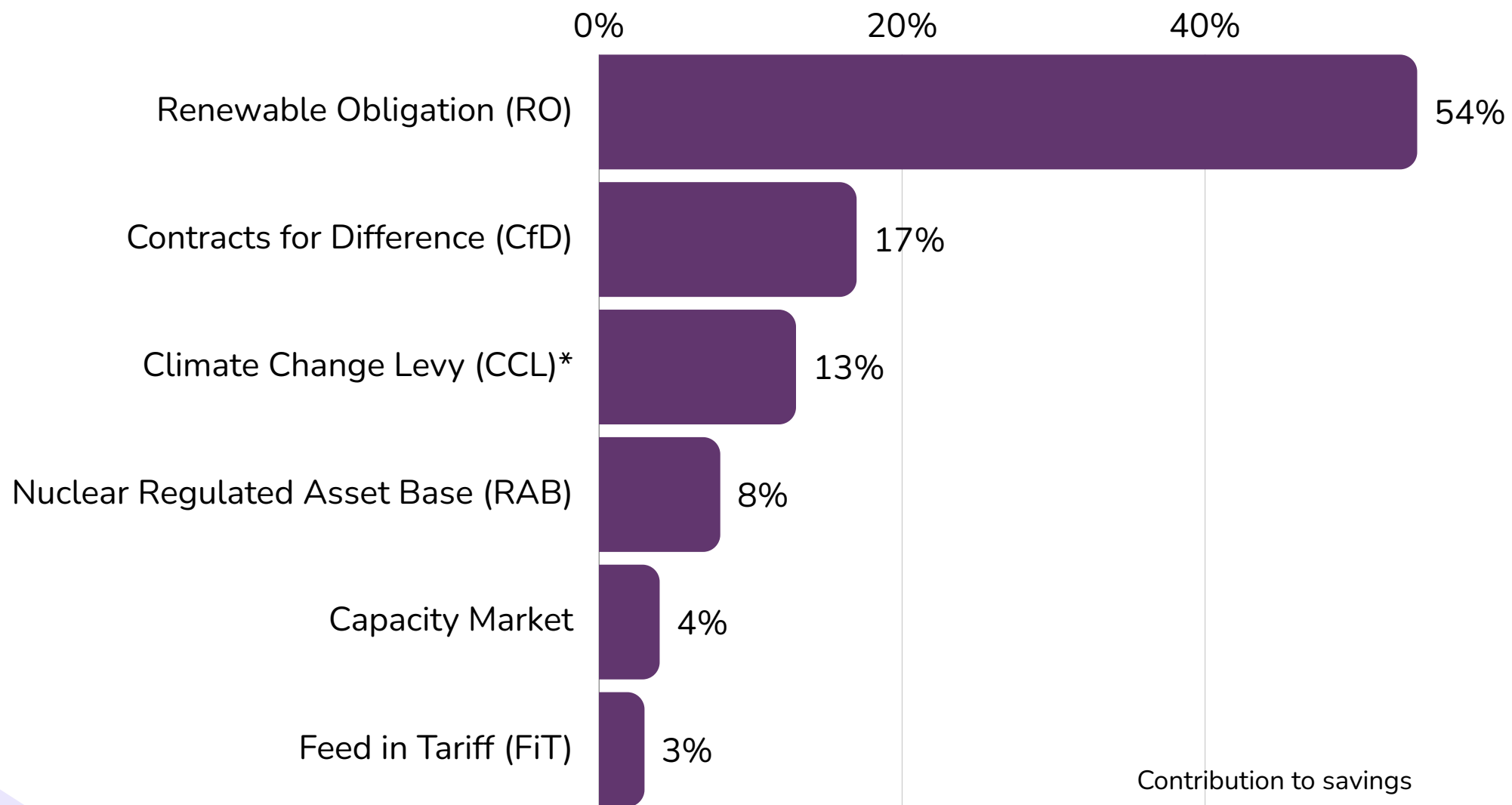


Volumes are only licence exempt when matched with consumers every half hour

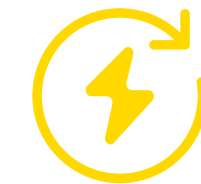


Where does the value come from?

Representative 2026/27 values, shown for illustration only



Levies are charged per MWh



Some rates (particularly CfD) can change frequently

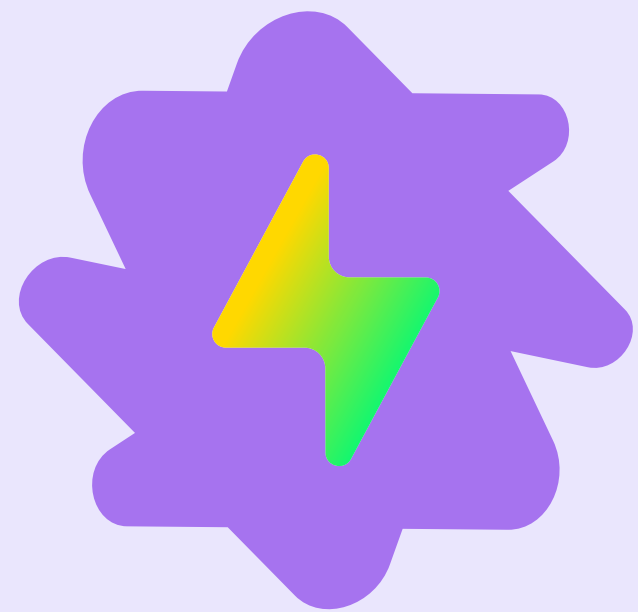


ESNA verifies matched volumes as licence exempt

Based on representative 2026/27 levy values for a GB non-domestic customer. Actual savings vary by customer type, half-hourly matched volume, timing, and settlement methodology. P442 specifically affects EMR levy treatment.

**CCL applies to non-domestic supply only*





Community Power Club

Licence Exempt Supply Offering



What is the Community Power Club?



Supply your community if you have a PPA with Yunity



You set the parameters for joining, inc. whether the Club is open to domestic customers & businesses



Households → **Coop Energy's Community Power Tariff** & have a Smart meter
Non-domestic → **Octopus Energy Business** customers & have a HH meter



Generators promote the Club & sign an LES supply agreement



Any generation not matched by the club members is topped up by Octopus Energy business customers



CPC Dashboard

- Each club will have its own bespoke Community Power Club dashboard & app
- Show a Half Hourly overview of generation and consumption + how much has been matched
- Encourages members to match their consumption with generation for best chance of receiving a discount on their electricity bill



**The more your match, the more you generate
additional income for your project**

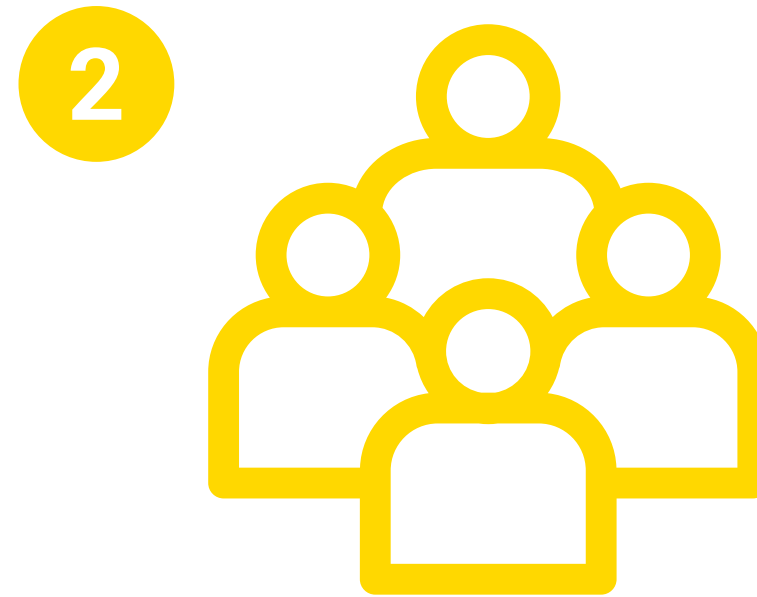


How to set up a Club



Check & agree

- Check you're eligible for Licence Exempt Supply
- Sign the LES agreement through Yunity



Set up Club

- Yunity sets up your Community Power Club
- Receive a resource pack to help build membership



Launch & grow

- Launch the club and share your join link
- Manage members online and earn £25 per switch as a Power Back Partner

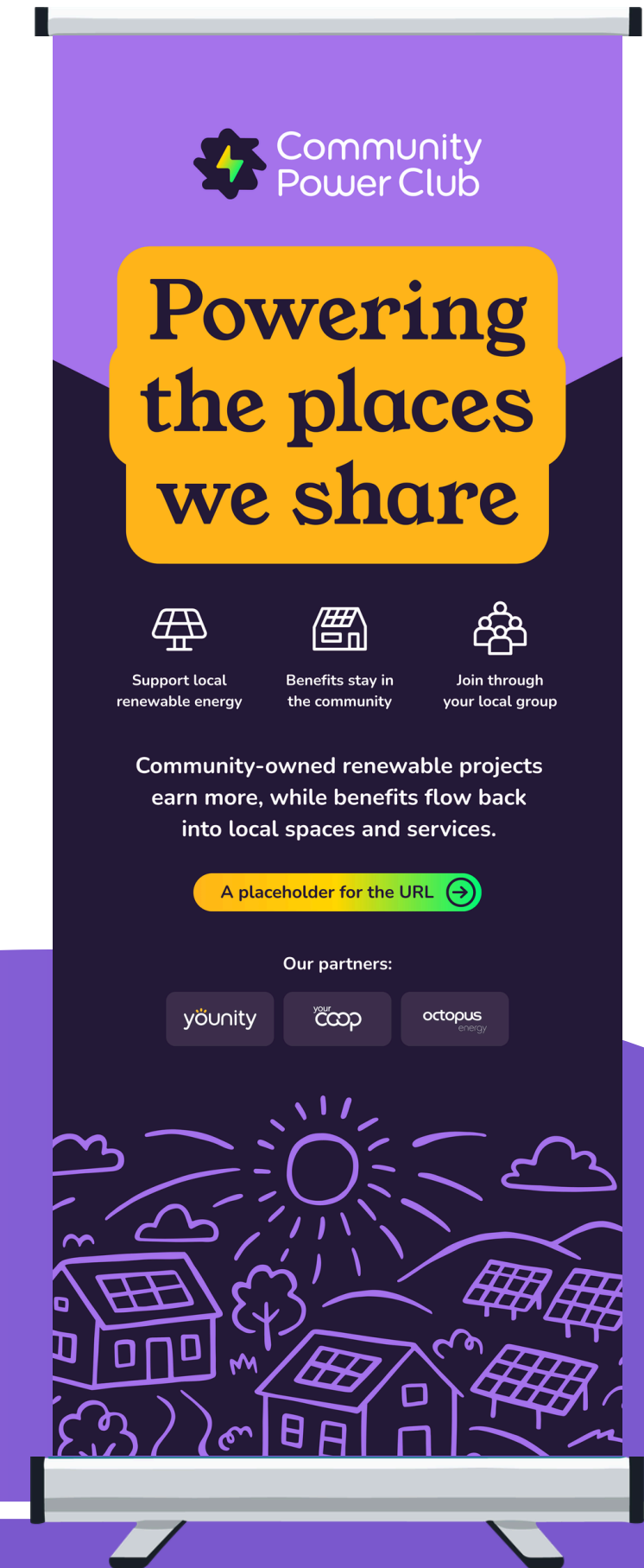
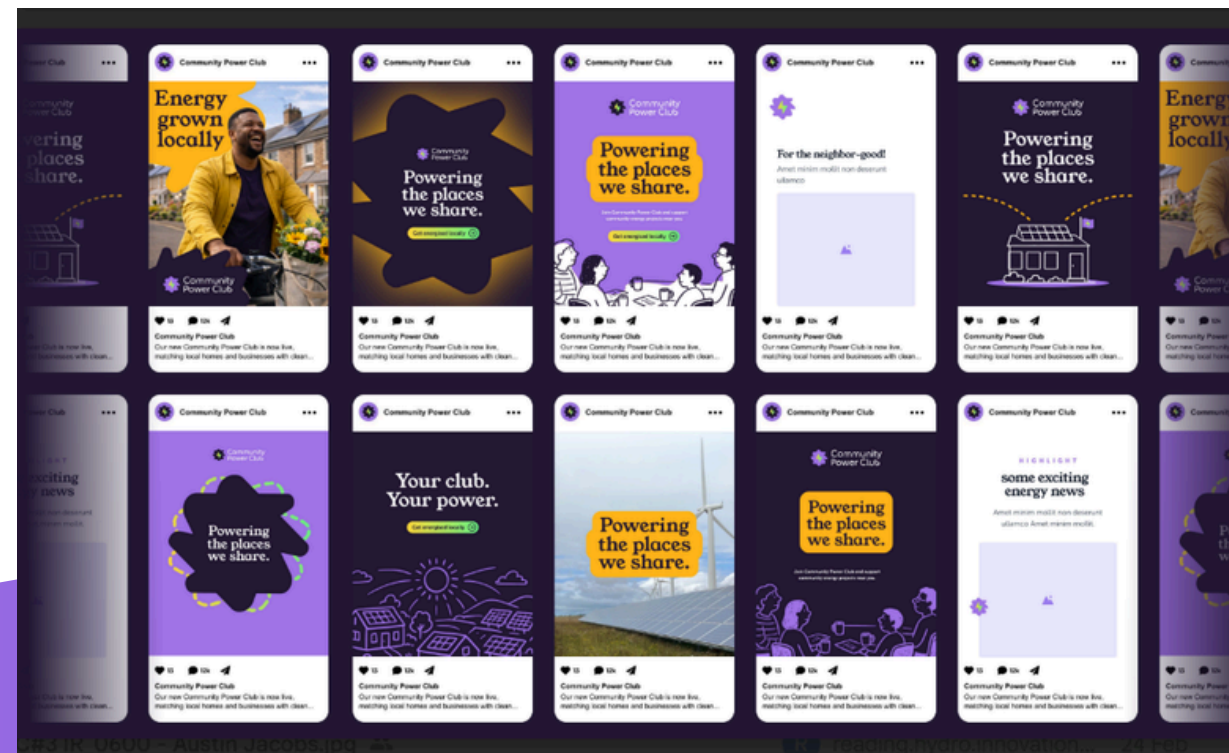


Yunity can advise, but you remain responsible for ensuring compliance

Resource Pack

We will provide community generators with a comprehensive resource pack for the development of your club including:

- Support with communicating how the club works, how to switch to the Community Power Tariff and how members can join
- Copy for leaflets, website, social media assets etc.
- FAQs





Contact Us

connie@younity.coop

www.younity.coop